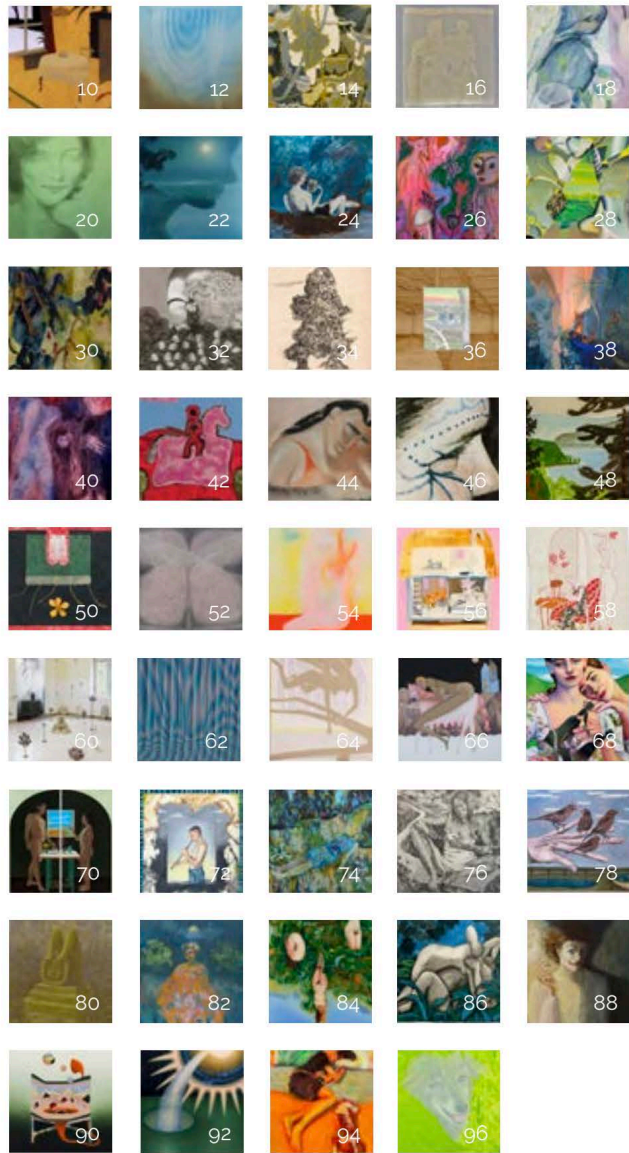


Double Volume Issue 30-31, 2023

**ART  
MAZE  
Mag**





# 10-97

## featured artists

- Iwo Zaniewski . 10
- Benjamin Andersson . 12
- Anne Griffiths . 14
- Emily Faith Holtzman . 16
- Mengmeng Zhang . 18
- Elisa Filomena . 20
- Fiona Finnegan . 22
- Leonie Plattner . 24
- Paige Perkins . 26
- Allan Villavicencio . 28
- Jennifer Laflamme . 30
- MOSAZ . 32
- Emily Rose Wright . 34
- Ian Caleb Molina Zoller . 36
- Tuan Vu . 38
- Nika Rubinshtein . 40
- Sebastian Supanz . 42
- Falon Stutzman . 44
- Hidetaka Suzuki . 46
- Jane McKenzie . 48
- Julia Norton . 50
- Paweł Olszewski . 52
- Tal Regev . 54
- Brad Stumpf . 56
- Nicole Mazza . 58
- Katalin Kortmann-Járay and Karina Mendreczky . 60
- Alex Puz . 62
- Tadeáš Kotrba . 64
- Chiara Baima Poma . 66
- Emma Steinkraus . 68
- Jeffly Gabriela Molina . 70
- Marcos N. Sayas . 72
- Sasha Deyash . 74
- Zora Gamberg . 76
- William Schaeuble . 78
- Anna Ortiz . 80
- Vanessa McKernan . 82
- Shoshana Walfish . 84
- Stanzie Tooth . 86
- Helia Chitsazan . 88
- Patricia Paludanus . 90
- Eirini Apsyhou . 92
- Heather Drayzen . 94
- Chen Peng . 96

## Fiona Finnegan



[www.fionafinnegan.com](http://www.fionafinnegan.com)

Image:  
*The infinite sadness*  
oil on linen on wood  
50 x 32 cm



Fiona Finnegan is an Irish artist, currently living and working in Belfast. She graduated with an MFA distinction from Ulster University, Belfast in 2009 and a BA Honors in Music and Visual Practice at the University of Brighton, 2001. Solo exhibitions include 'Midnight Candy' at Arusha Gallery, Edinburgh (2020) and 'The Frog Devoured The Sun' at Domobaa Gallery, London (2018) and the University of Ulster, Belfast (2017). Recent group shows include 'Ashes denote what fire was' at Fortnight Institute, New York, 'Generation 2022' at Butler Gallery, Kilkenny, 'Chorus' at Arusha Gallery, Edinburgh and 'Waking the Witch', a touring exhibition supported by Arts Council England (2018/2019).

Fiona Finnegan's paintings explore the myths and mysteries surrounding twilight and dawn, times when night and day are in flux, the witching hour. By merging found images different points in time coalesce creating an alchemical relationship, halting the continual flow for a moment of pause—in which to observe moonlit hazy landscapes often occupied by vast silhouettes, transporting the viewer to an ethereal, atmospheric dreamscape.

Image:  
*Dana's hands*  
oil on linen on wood  
50 x 38 cm